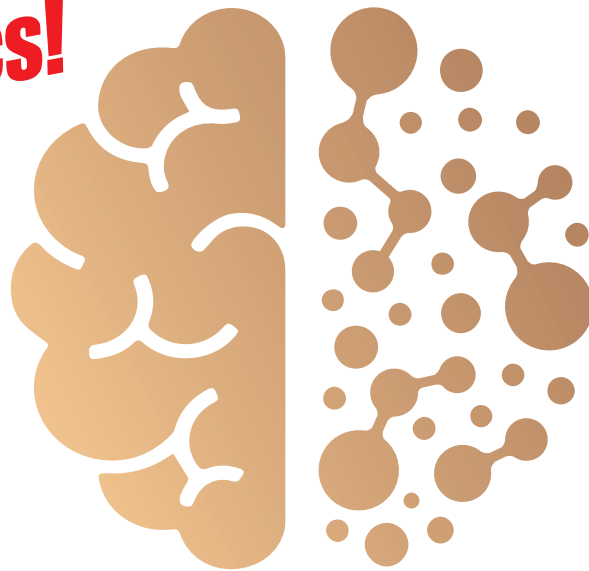


# SUN neuro

1000 MCG PLASMALOGEN

**A Revolution  
In Nootropics!**



**A Daily Supplement for  
Brain and Memory Support\***

DIETARY SUPPLEMENT



Helps boost memory  
& cognitive abilities\*



Supports focus &  
mental clarity\*



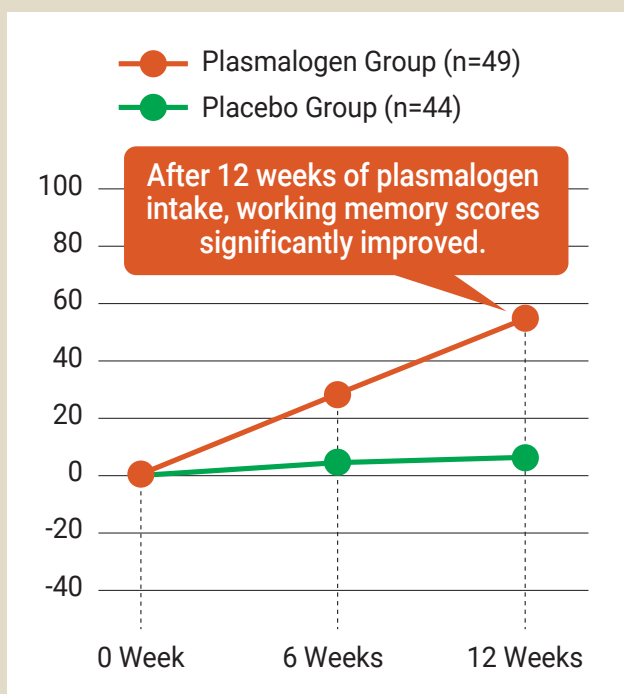
Supports  
brain cell health\*

# Experience the Future of Brain Health: The Ultimate Nootropic Breakthrough!

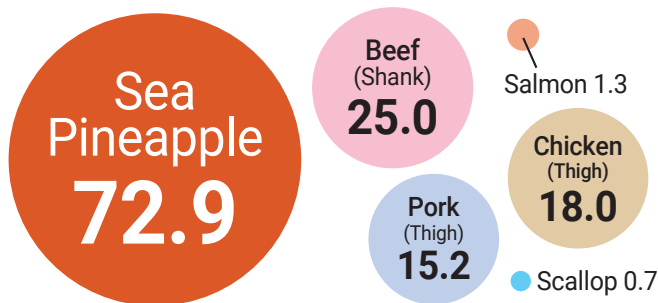
Take proactive steps toward long-term brain health with **Sun Neuro**, a scientifically backed daily supplement that helps promote cognitive protection and performance.\*

## Working memory scores improved by taking Sea Pineapple-Derived Plasmalogen\*

Japanese adults aged 40 and over, experiencing a decline in memory, significantly increased their working memory scores by consuming Sea Pineapple-derived plasmalogen.



### The amount of plasmalogens in food (µmol/100g of wet weight)



Values are the total of four molecular species: Oleic acid-type plasmalogen, Arachidonic acid-type plasmalogen, EPA-type plasmalogen, and DHA-type plasmalogen. Source: Yamashita S, et al. Lipids 51 (2016)

**Method:** Japanese men and women aged 40 to under 75, experiencing memory decline, were divided into groups consuming Sea Pineapple-derived ethanolamine-type plasmalogen at 0.1mg per day and those taking a placebo for 12 weeks. Their working memory scores were evaluated by remembering and clicking on lights in the same sequence using a flashlight task.

**Source:** "Effectiveness and Safety Evaluation of Sea Pineapple-Derived Ethanolamine-Type Plasmalogen on Cognitive Function - Placebo-Controlled Randomized Double-blind Parallel Group Comparison," *Pharmacometrics* 104 (1/2) 17-24 (2023)

**Authors:** Ayaka Yamamoto<sup>1</sup>, Teruki Aizawa<sup>1</sup>, Daiki Kubomura<sup>1</sup>, Yusuke Akahori<sup>1</sup>, Shinji Yamashita<sup>2</sup>, Kiyotaka Nakagawa<sup>3</sup>, and Teruo Miyazawa<sup>4</sup>

**Affiliation:** 1. Yaizu Suisankagaku Industry Co., Ltd., 2. Obihiro University of Agriculture and Veterinary Medicine, 3. Tohoku University Graduate School of Agriculture, 4. Tohoku University New Industry Creation Hatchery Center

## Sea Pineapple is a breakthrough discovery for brain health support!\*

### Supplement Facts

Serving Size: 6 capsules  
Servings Per Container: 30

Amount Per Serving	%DV
Total Carbohydrate	1 g <1%**
Dietary Fiber	<1 g 3%**
Plasmalogen (from sea pineapple powder)	1000 mcg †

\*\* Percent Daily Values are based on a 2,000 calorie diet  
† Daily Value (DV) not established

**Other Ingredients:** Crystalline Cellulose, HPMC Capsule (hydroxypropyl methylcellulose, water), Amorphous Silicon dioxide.

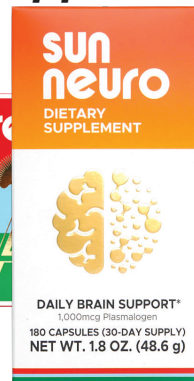
A new study has confirmed that taking **SUN CHLORELLA** and **SUN NEURO** in tandem enhances the preventative effect on cognitive decline!\*

Simultaneous Intake of Chlorella and Ascidian Ethanolamine Plasmalogen Accelerates Activation of BDNF-TrkB-CREB Signaling in Rats, by Hideo Takekoshi, Masaki Fujishima, Taiki Miyazawa, Ohki Higuchi, Takahiro Fujikawa, & Teruo Miyazawa, *Molecules* 2024, 29, 357.

## ORDER NOW!

# 1-800-829-2828

wholesaleorders@sunchlorellausa.com



\*These statements have not been evaluated by the Food and Drug Administration. This product is not intended to diagnose, treat, cure, or prevent any disease.

SNFLCAS



Sun Chlorella USA  
17372 Eastman, Irvine, CA 92614  
sunchlorellausa.com

